




The Mound
1943



Digitized by the Internet Archive
in 2012 with funding from
LYRASIS Members and Sloan Foundation

<http://archive.org/details/mound1943fair>

The Annual Publication
————— of the —————
Students of Fairmont
State College

FAIRMONT COLLEGE LIBRARY

ELAINE HUTCHINSON
Editor

ANNE BLAIR
Business Manager



THE
MOM

943

UND



DEDICATION

A dedication is a proud thing. It is an expression of gratitude and devotion, of friendship and admiration, and, above all, of inspiration. It was they, our men in the service, who inspired this book. They were our schoolmates, our brothers, our friends, and they left us the work of carrying on. We feel that in a small way this book has justified their trust in us.

Fairmont College is proud of her sons. In the Phillipines, at Guadalcanal, in Africa, in England and Australia, and in our own America they have proved themselves valiant Americans. Their college feels gratefully humble that she has had a share in shaping the characters and spirits of the defenders of our nation.

RB
378.754
F166 mcs
1947



When our boys left for parts unknown they took the heart of "The Hill" with them. Without their gay hearts and careless laughter, without their infectious good spirits and love of life, it is a dull place. It seems to be waiting, holding its breath until its boys come back. Until they do it will never be the same again.

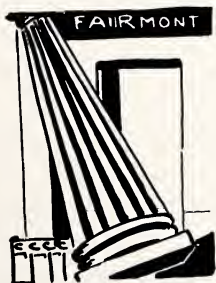
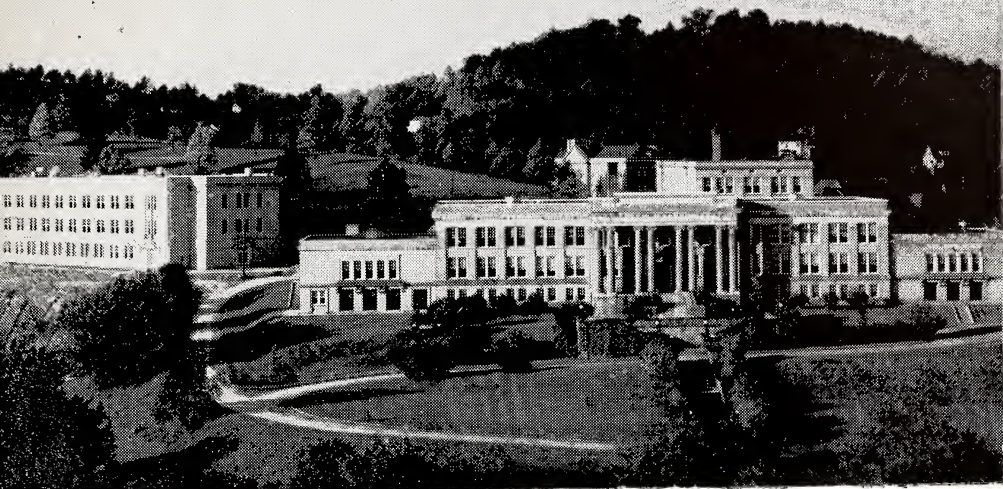
Our task is to make sure they do come home. To make sure that they will again fill the classrooms and the halls. To devote ourselves to the job of bringing them back so that they may again ring the Victory Bell, or stroll leisurely down Senior Walk, or dance with their girls in the Social Room. This was the kind of life they knew and loved and, without complaint, they left it to help rebuild a crumbling world.

Fairmont College is both proud and humble to dedicate her annual to her men in the service, those men who have dedicated their lives to their country.

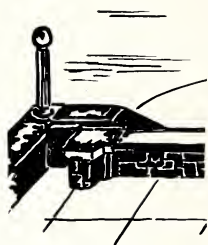
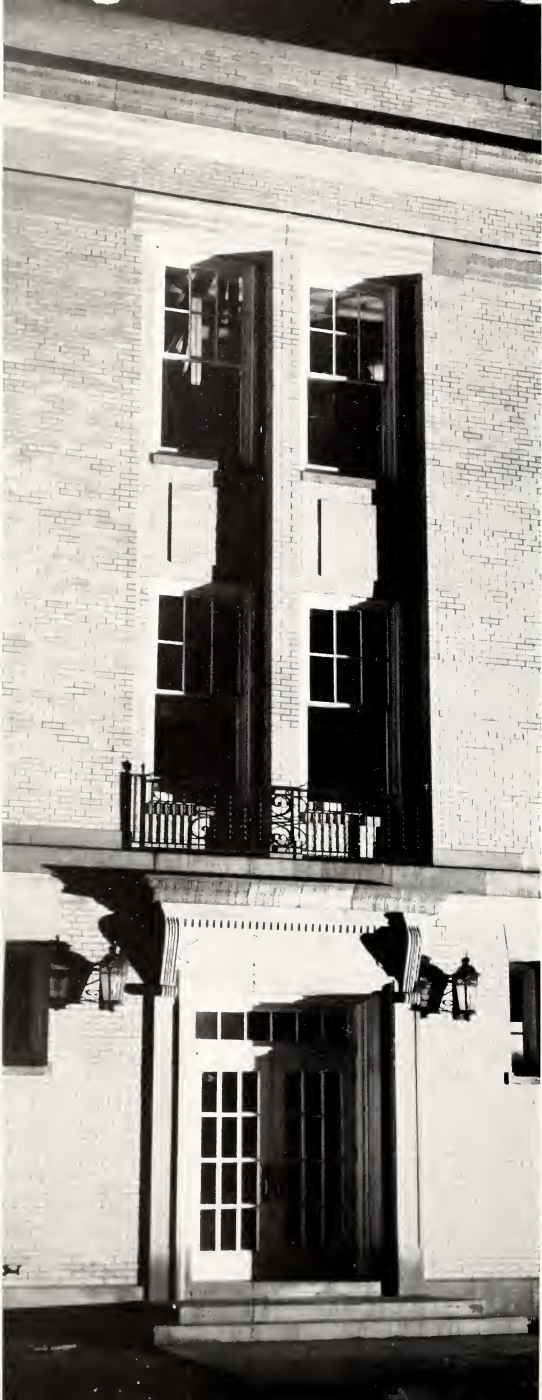
FAIRMONT COLLEGE LIBRARY

51057

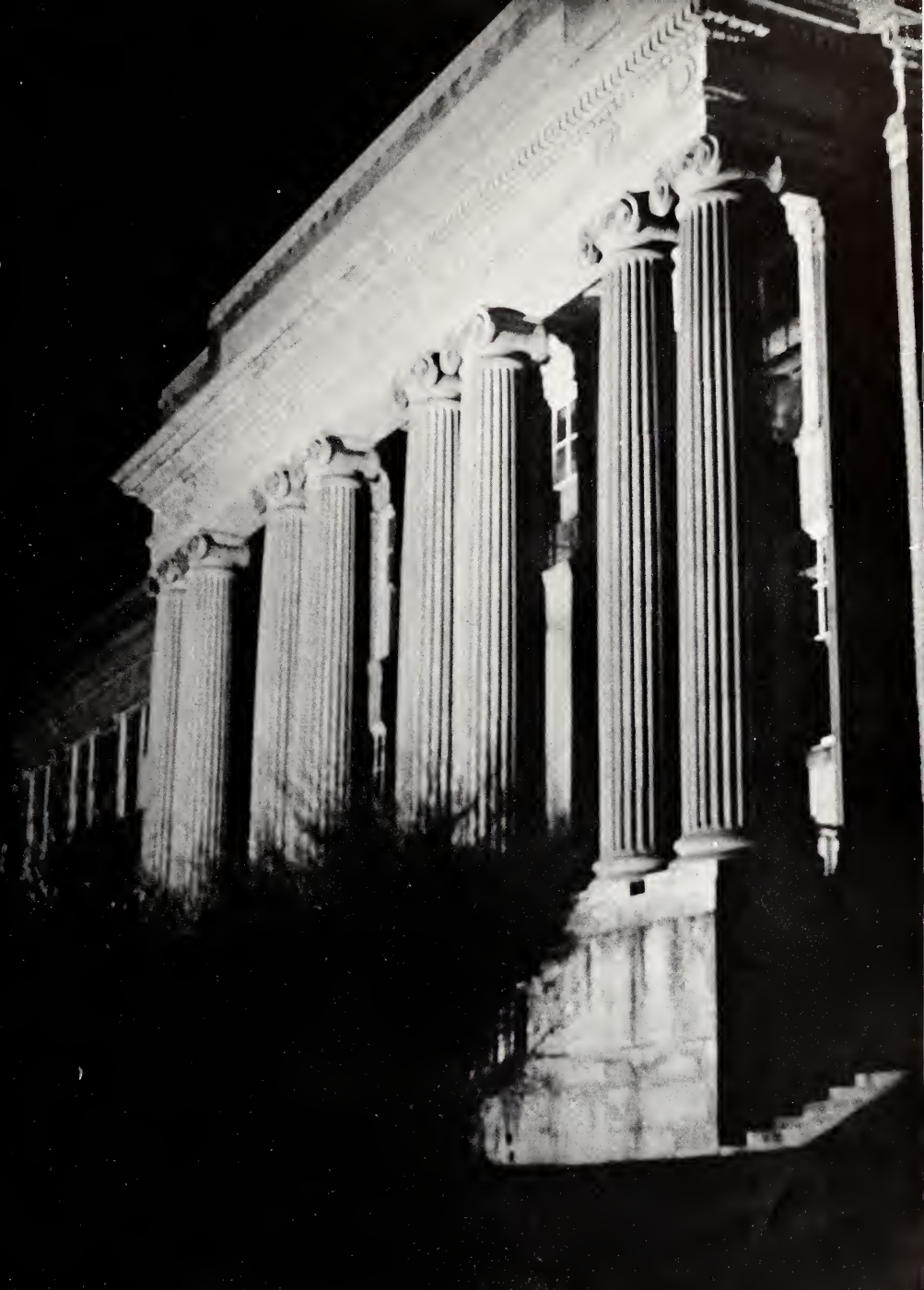




The view of Fairmont State College shown above is one of the most recent photographic studies of the rapidly expanding school. Besides adding a new gymnasium to its buildings, it has also made academic changes. By an act of the legislature the name Fairmont State Teachers College was changed in March 1943 to Fairmont State College. Students are now permitted to minor in speech; and Spanish, a comparatively recent addition to the language department, is a most popular subject.

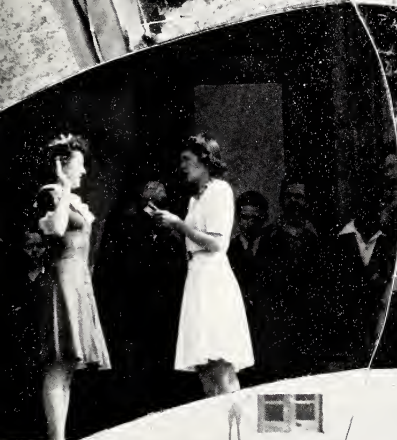


Founded in 1865, Fairmont State College is known far and wide as "The Friendly College." It has grown into an educational institution which features a beautiful and spacious campus and boasts one of the finest gymnasiums in the state of West Virginia. Furnished with the most modern equipment, Colebank Gymnasium is the possessor of two gym floors, a modern swimming pool, clinics, streamlined classrooms, locker rooms, showers, offices, and equipment rooms.





The halls of Fairmont College are like a long, gray thread upon which are strung, as precious jewels, the classrooms. In these rooms is imparted the most potent of all powers, knowledge.







C U R R I C U L A R



Dr. Joseph Rosier

The spirit of Fairmont State College is personified in its president, Dr. Joseph Rosier. When newcomers to "The Hill" wonder at the atmosphere of harmony and happiness that pervades "The Friendly College," they have only to ask his students to find that it is "Uncle Joe" who has laid the foundation for the feeling of good will. Kindliness, friendliness, and the desire to help one's fellow men are only a few of the high standards he has set for his school.

Long recognized as a leader in educational circles, Dr. Rosier has been the guide and friend of teacher and student alike. He believes, especially in these times of stress, that young people should learn to shoulder responsibility and this belief is manifested in the school's thoroughly democratic system of government.



A native of the state, Dr. Rosier was born in the village of Wilsonburg in Harrison County. He began his teaching career in 1890 and for fifty years has been actively engaged in the field of education.

From a village school Dr. Rosier went to the principalship of a Salem school, thence to the superintendency of the schools of Harrison County. It was there that his public career began in earnest. At the same time he was furthering his formal education and in 1895 received his P.Bd. degree from Salem College. Later he received an A.M. degree, and in 1933, after the National Education Association had honored him as its president, Marshall College conferred an LL.D. upon him. In May, 1941, Fairmont College celebrated the news that their beloved president had become the Junior United States Senator from West Virginia.

The love of his students and the admiration of his friends are the feelings inspired by Dr. Rosier and such tribute is paid only to those who are great of heart.



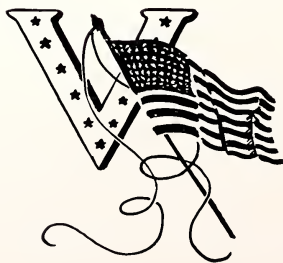
JOHN WESLEY PENCE
Dean of Men



MAHALA DORCAS
PRICHARD
Dean of Women



OLIVER SHURTLEFF
Dean of Instruction





GEORGE R. HUNT
Biology



ETHEL ICE
Registrar



M. E. McCARTY
Mathematics

FRANK HALL
Education

MARY B. PRICE
Music

FRANK S. WHITE
Education

RUTH FERGUSON
Art



MAUD HULL
Education



GEORGE TURLEY
English



EVA D. COMPTON
Home Economics



JASPER COLEBANK
Physical Education



LUCILLE HENRY
French and Spanish

ERNEST FREED
Art and French

RUTH KREIHN
Physical Education

FRANCES RIDGEWAY
Dietician, Morrow Hall

GROVER C. PLATT
Economics

EILEEN KURLICH
Stenographer

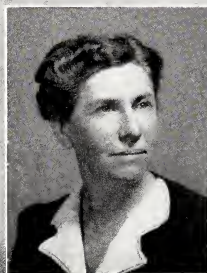
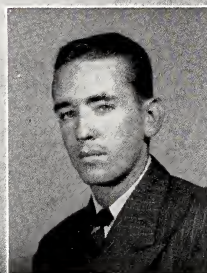
MEDORA MASON
Journalism

CATHERINE FREEMAN
Assistant Registrar

C. D. HAUGHT
Physics

ELIZABETH TERRY
Latin and Spanish





RUTH STALEY
Music

H. F. ROGERS
Chemistry

DOROTHY ODBERT
Assistant to Bursar

EMMA PARSONS
Librarian

EDNA AMOS
Recorder

EDNA I. MILLER
Morrow Hall

JOHN T. EVANS
Music

MARY WHITE
Physical Education

MARY HAWKINS
Assistant Librarian

WILFORD WILSON
Physical Education

JEAN RICHMOND
Home Economics

KATHERINE THOMAS
Secretary



E. L. LIVELY
Sociology



HAROLD FLEMING
Education



L. A. WALLMAN
Speech



R. P. WARD
Chemistry

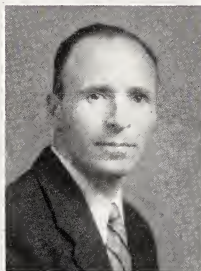


FLORENCE CLADY
Nurse



BESSIE K. CRYSTAL
History





CHAS. M. ROBERTS
Biology

LOUISE LEONARD
Education

FRANCIS SHREVE
Education

HADDON RHODES
English

ERNESTINE TROEMAL
Physical Education

PAUL F. OPP
English and Speech

HERMAN A. SHUTTS
Mathematics

MARJORIE D. TATE
English

C. A. LINDLEY
History

Senior Class

DORAN MORRISON
President

MARGARET ANN HUFF
Vice President

MARY ANN LIVELY MUIR
Secretary-Treasurer



Dick, Elaine, and Doran
grin obligingly

At Fairmont College the road to respect and admiration is paved only by hard work and honors fairly won. Its students are judged by their deeds. It is for this reason that we proudly point to the Senior Class. Entering school in that fateful month of September, 1939, it has, through four difficult years, carried on the spirit of Fairmont College. Although it has lost many members to the service, those remaining have shouldered the extra burden cheerfully and performed their duties efficiently.

Our Seniors have led the Student Body with Eugene Satterfield as President, Josephine Jenkins as Vice President, Anne Lynch as Secretary, and Randolph Norris as Treasurer. Class Officers were Doran Morrison, President; Margaret Ann Huff, Vice President; and Mary Ann Muir, Secretary-Treasurer.

Columns Staff members were Ruth Mayhall, Editor-in-Chief; Phoebe Louise Coombs, Business Manager; and Georganna Romine, Society Editor. Active on the Mound Staff were Elaine Hutchinson, Editor-in-Chief; Robert Pence, Associate Editor; Betty Longfield, Art Editor; and Mary Ann Muir, Assistant Advertising Manager.

Senior participants in varsity sports are Robert Pence, Dick Berry, Walter Owens, Warren Owens, Eugene Satterfield, John Dewey Hawkins, and Frank Meyers.

Often seen in productions staged by the college theater group were Melissa Curry, Betty Longfield, and Elaine Hutchinson.

Those in the class who were recognized by Who's Who Among Students in American Universities and Colleges were Randolph Norris, Robert Pence, Josephine Jenkins, Ruth Mayhall, Walter Owens, Elaine Hutchinson, Georganna Romine, Phoebe Louise Coombs, Lucille Willis, Mildred Jones, Doran Morrison, Thomas Koon, Eugene Satterfield, Annabelle Alkire, and Betty Reed.



The Senior Class of 1943

Mary Jean Charleton—Fairview; Physical Education; Gamma Chi Chi, Columns Staff, Girls' Physical Education Club.

Georganna Romine—Shinnston; Home Economics; Sigma Theta Rho, Sigma Pi Rho, Columns Staff, Y.W.C.A., Home Economics Club.

Elaine Hutchinson — Fairmont; English; Gamma Chi Chi, Alpha Psi Omega, Nu Alpha Phi, Masquers, Columns Staff, Mound Staff, Publications Board.

Mildred Wamsley—Morgantown; Physical Education; Alpha Delta Chi, Girls' Choral Club, Girls' Physical Education Club.

Evelyn Middaugh — Fairmont; Home Economics; Home Economics Club.

Nadine Nestor—Terra Alta; Art; Gamma Chi Chi.

Robert E. Pence—Fairmont; Physical Education; Tau Beta Iota, Lambda Alpha Sigma, Mound Staff.

Eugene Satterfield — Fairmont; Biology; Tau Beta Iota, Kappa Delta Pi, Lambda Alpha Sigma, Student Body Officer, Student Council, Publications Board.

Josephine Jenkins — Fairmont; English; Gamma Chi Chi, Alpha Psi Omega, Pi Upsilon Phi, Kappa Delta Pi, Student Body Officer, Student Council, Columns, Y.W.C.A., Girls' Choral Club.

Randolph Norris—Fairmont; Mathematics; Tau Beta Iota, Student Council, Student Body Officer, Publications Board.

Richard Berry—Farmington; Physical Education; Tau Beta Iota, Lambda Alpha Sigma.

Margaret Anne Huff—Fairmont; Elementary; Gamma Chi Chi, Girls' Choral Club, Mound Staff, Class Officer.

Melissa Brahm Curry—Fairmont; Art; Gamma Chi Chi, Alpha Psi Omega, Masquers.

Mary Anne Lively Muir — Fairmont; Physical Education; Gamma Chi Chi, Girls' Choral Club, Mound Staff, Class Officer.

Anne Lynch — Fairmont; Mathematics; Alpha Delta Chi, Student Council, Student Body Officer.





Betty Frances Reed—Boothsville; English; Alpha Delta Chi, Kappa Delta Pi, Pi Gamma Mu, Columns Staff.

Frank Meyers — Fairmont; Physical Science; Tau Beta Iota.

Phoebe Louise Coombs — Fairmont; English; Alpha Delta Chi, Pi Upsilon Phi, Masquers, Columns Staff.

Ruth Mayhall — Shinnston; English; Sigma Theta Rho, Kappa Delta Pi, Columns Staff, Publications Board.

Ruth Wittman — Fairmont; Home Economics; Home Economics Club.

Mary Blackburn—Gormaniana; Social Studies; Sigma Theta Rho, Y.W.C.A.

Maxine Johnson—Fairmont; Elementary; Alpha Delta Chi, Y.W.C.A.

Warren Owens—Clarksburg; Physical Education; Zeta Sigma, Lambda Alpha Sigma.

Mary Jean Abbott — Fairmont; Biology; Sigma Theta Rho, Kappa Delta Pi, Y.W.C.A., Social Science Club.

Edward Konick—Monongah; Social Studies.

Walter Owens—Clarksburg; Physical Education; Zeta Sigma, Lambda Alpha Sigma.

Virginia Coffman — Fairmont; Biology; Home Economics Club.

Mary Lee Riggs Weekly — Monongah; Home Economics; Sigma Theta Rho, Home Economics Club.

Elizabeth Longfield—Clarksburg; Art; Alpha Delta Chi, Alpha Psi Omega, Masquers, Mound Staff, Girls' Choral Club.

Anna Sallese — Newburg; Home Economics; Masquers, Y.W.C.A., Home Economics Club.



Doran Morrison — Grafton; English; Tau Beta Iota, Masquers, Student Council, Class Officer.

Pauline Robinson—Farmington; Home Economics; Sigma Theta Rho, Y.W.C.A.

Mary Jane Stevens — Fairmont; Physical Education; Alpha Delta Chi, Y.W.C.A., Girls' Physical Education Club.

Mary Heck — Barrackville; Home Economics; Y.W.C.A.

Mildred Jones — Grafton; Home Economics; Alpha Delta Chi, Columns Staff, Y.W.C.A., Girls' Choral Club.

Ellen Jane Watson—Tunnelton; Home Economics; Sigma Theta Rho, Masquers, Y.W.C.A., Girls' Physical Education Club.

Sara Helen Powell — Mannington; Home Economics; Kappa Delta Pi, Y.W.C.A.

Thomas Koon — Fairmont; Latin; Zeta Sigma, Sigma Pi Rho, Kappa Delta Pi, Social Science Club.



FAIRMONT COLLEGE LIBRARY

*Junior
Class*

HARLEY PYLES
President

JEAN SHINGLETON
Vice President

LENA GABRIEL
Secretary-Treasurer



Nedra and Patty romance with
a few campus Romeos

Although 1942-43 presented them with an unusual number of problems, the Junior Class rolled up its sleeves and plowed through all difficulties. Its members have proved themselves worthy to fill the senior offices which they will inherit. Their class officers were Richard Swisher, succeeding Harley Pyles as President; Jean Shingleton, Vice President; and Lena Gabriel, Secretary-Treasurer.

Active in dramatic productions were Eleanor Sincell, Lucille Reed, and Don Lynch.

Those from this class recognized in Who's Who Among Students in American Universities and Colleges were Aretta Summers and Turner Sturm.

The two major publications of the school had on their staffs several members of the Junior Class. On the staff of the Columns were Aretta Summers, News Editor; Rhoda Moss, Circulation Manager; Turner Sturm, Sports Editor; and Marguerite Curry, Photographer. Turner Sturm also served as Sports Editor for the Mound and Don Lynch was a Photograph Editor.

Athletes of the group were Tom Andrick, Steve Yergovich, Harley Pyles, and Carl Hall.

To top a most satisfactory year, pretty Lucille Reed was crowned Queen of the tenth annual Junior Prom. Her Maid of Honor was Mary Davinna Hunsaker.



Junior Class

ARETTA SUMMERS
Fairmont
Alpha Delta Chi

MARY TETRICK
VAN METER
Enterprise
Sigma Theta Rho

ELMER HENDERSHOT
Fairmont
Zeta Sigma

JEAN CAMPBELL
Rivesville

MARY ELIZABETH
CRONIN
Fairmont
Gamma Chi Chi

ROBERT O'CONNOR
Mannington
Tau Beta Iota

VIOLA SPRINGER
Fairmont
Alpha Delta Chi

CRYSTAL OGDEN
Lumberport
Sigma Theta Rho

TURNER STURM
Mannington
Tau Beta Iota

MARJORIE McGREW
Brandonville
Delta Sigma Epsilon

ARTHUR LAMBERT
Clarksburg
Tau Beta Iota

ELEANOR SINCELL
Oakland
Gamma Chi Chi

SUE ROSE
Heaters
Sigma Theta Rho

THOMAS ANDRICK
Philippi
Zeta Sigma

VIRGIL WILSON
Fairview

RICHARD SWISHER
Fairview
Tau Beta Iota

PAULINE WILSON
Fairview
Alpha Delta Chi

RHODA MOSS
Shinnston

ROBERT GROVES
Terra Alta

DORA GENE BYER
Fairmont
Sigma Theta Rho



STEVE N. YERGOVICH
Fairmont
Zeta Sigma

MABEL SEE
Roanoke
Delta Sigma Epsilon

HARLEY PYLES
Fairmont
Sigma Tau Gamma

JEAN SHINGLETON
Grafton
Alpha Delta Chi

CARL HALL
Barrackville

MARGUERITE CURRY
Fairmont

DONALD LYNCH
Clarksburg
Zeta Sigma





Sophomore Class

JERRY WEST
President

MARTHA POWERS
Vice President

HELEN BENDA
Secretary-Treasurer



What's cookin', Jiggs?

Talent and efficiency, together with the necessary ambition and spirit, were characteristic of the Sophomore Class. During their two years at Fairmont College they have been continually advancing in all lines of endeavor. In future years the Sophomore Class will further prove their ability when they take the leadership of the school upon their shoulders. Active in school functions, the names of Sophomores who deserve recognition are many. Class officers were Jerry West, President; Martha Powers, Vice President; and Helen Benda, Secretary-Treasurer.

Athletes of the group were Bernie Bieterman, Bob Johnston, George Hamric, and Jiggs Marra. Cheerleaders were Marian Lilley, Kitty Gaskins, and Paul Shahan.

Active in college play productions were Mary Frances Zinn, Norvell Lilly, Bob Higinbotham, Don Squires, Jerry West, Martha Powers, Anne Blair, Don Cole, and Waldon Skinner.

Taking part in issuing the two major publications on the campus were several Sophomores. On the staff of the Mound were Anne Blair, Business Manager; Marian Lilley, Advertising Manager; Mary D. Hunsaker, Associate Business Manager; and Bob Higinbotham, Photograph Editor. Jack Millan was Copy Editor on the Columns staff.



Sophomore Class

Thomas Robert Argiro
Dora Vivian Ball
Kenneth Neil Beale
Helen Benda
Helen Elizabeth Benson
Bernard Patrick Bieterman
Anne Blair
Mildred A. Boggess
C. Otmer Brookover
Patricia Burke
Florence Lucille Corley
Nell Coulter
William Dell
Angeline DeLorenzo
Doris Ruth Devore
Helen Frances Dragoo
John William Dragoo
William Henry Ford
Geraldine Irene Given
George J. Hamric
Wilmer Edwin Hanne
Margaret Louise Harden
Sara Lucille Harner
Harry Tolbert Haugh
Edwin Ancil Heck
Erwin Encil Heck

Fred Robert Higinbotham
Florence Isa Horner
Robert Keith Hunt
Fritz Forrest Jacobs
June Ann Johnston
Robert Lincoln Johnston
Frances Lee Jones
Robert E. Kennedy
James Tony Lee, Jr.
Barbara Leigh Lemley
Marion Gayle Lilley
Norvell S. Lilly
Charles Alexander Lindley
Ray Vincent Linn
Jeanne Louise Loudon
Louis Edward Marra
John Mascaro
Teresa C. Mazza
John Patrick McAteer
Betty Jane McGhee
Dolores McKinney
T. Jack Millan
Freda Maye Moore
Katherine L. Muzichuck
Phyllis Jewell Muir
Antionette Francis Oliver
Angelina Palotta

Margaret Pantalone
Tony Pasquale
Margaret Jane Payne
Angelyn Barbara Perry
Martha Powers
Victor Dwight Price
Edith Lucille Reed
Wilda C. Ridenour
Loretta F. Romano
Nina Margaret Rosier
Paul Willard Shahan
Helen Elizabeth Shingleton
Anna Ruth Shreve
Virginia Gae Sites
Clarence Waldon Skinner
Donal Morley Squires
Alice Swiger
Eva Lyn Ulm
Barbara Ruth Victor
Catherine Josephine Wallace
Dorothy Lee Weeks
Jerry Jenkins West
Robert Lee Willis
Joyce Wiseman
Lois Bertha Yedlosky
Mary Frances Zinn

Freshman Class

RODERICK DIXON
Vice President

VIRGINIA SUMMERS
Secretary-Treasurer

WILLIAM CLELLAND
President



When Springtime hits
the campus—!

Proving themselves to be an energetic, hard-working, and efficient group, the Freshman Class took an active interest in every phase of school life. Because they so willingly performed the tasks expected of them they are now accepted in all the circles on the hill. Their adaptability to college life has shown them to be of that stuff of which Freshman classes at Fairmont College are made.

Taking part in all school functions were many Freshmen. Class officers were Bill Clelland, President; Rod Dixon, Vice President; and Virginia Summers, Secretary-Treasurer.

Participants in college dramatics were Julia DeBolt, Jimmy Shaffer, and Sam Bonasso.

On the staff of the Columns were JoAnne Jenkins, Assistant Society Editor, and Dorothy Cook, typist.

Active in athletics were Frank Conaway, Jack Gump, Don Loudon, Bob Schimmel, Bill Swiger, and Jim Yanero.



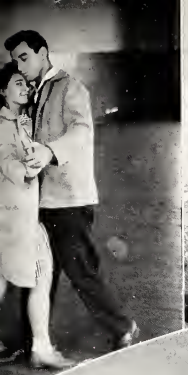
Freshman Class

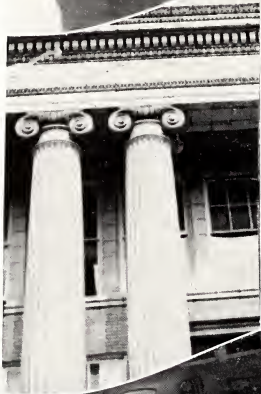
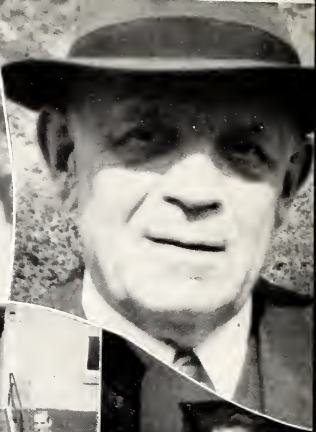
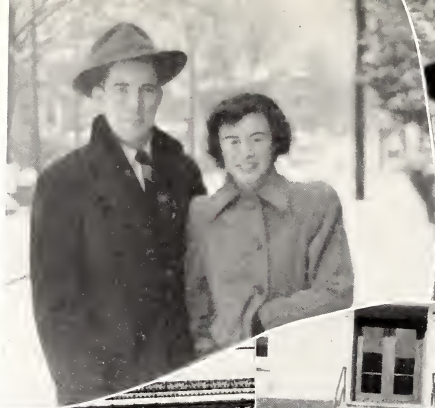
Jacqueline Elizabeth Ammons
Betty Lee Baily
Patricia Louise Barr
Mary Louise Bennett
Florence Ellen Bice
Joe M. Boggs
Samuel Pete Bonasso
Sara Jane Brannon
Roberta Alice Brown
Wilma Jean Casseday
Doris Cleavenger
William Michael Clelland
Anna Frances Clifford
Frank Howard Conaway
Mary Jean Connor
Dorothy Lee Cook
Willa Printz Copenhaver
William Bernard Cronin
Edwin Haught Cunningham
Elton Boyce Curry
Julia Lee DeBolt
Helen Detch
Madeline DeVito
Delaine Irene Durst
Ray E. Epperly
Ruth Elizabeth Fast
Dorothy Marie Fletcher
Mabel Maxine Fluharty
David W. Foreste
Annabelle Marie Glover
Detta LaVaught Glover
Helen Marie Gotzes
Margaret Ann Gower
Mary Jean Graham
Paul Graziani
Ann Elizabeth Griffith
Clarence Jackson Gump
Betty Lou Haller
Hazel Naomi Hayhurst
Michael Anthony Hermosilla

Charles Fredrick Hickle
Doris Jean Hiner
Suzanne Holbert
Charles Chester Huffman
Frances Elizabeth Jamison
Betty Lee Janes
Jewell Genevieve Jarvis
Joanne Patricia Jenkins
Barbara Anita Johnston
Alsace-Lorraine Kilcoyne
Elizabeth Ann Knisely
Leo Kullman, Jr.
Martha Lou Lambert
Jeanne LaVaughn Lane
Juanita June Lane
Norma Jean Lilley
Don Conkling Louden
Arlene Lowe
Samuel Michael Mallamo
Betty Lou Mapel
Hyer Martin
Richard Curry Marts
Elizabeth Peddicord McCarthy
Doris Amy McCauley
Charlotte Madeline McKee
James Keith Merrifield
Niel M. Messick
Beryl Middaugh
Betty Jane Morris
Pauline Musichuck
Anna Naumik
Olive Elizabeth Neely
Gwendolyn Grace Newlon
Kenneth Marshall Newlon
Mary Norwich
Beryl Moore Nuzum
Gloria Palotta
Kendelyn Prince
Elizabeth Findley Ramsey
John Denver Robey
Georgia Marie Robinson

Marjorie Ann Robinson
Ann Carolyn Ross
Edward Encil Rudy
Julia Irene Sabo
Frank Carroll Sanderbeck
Sarah Eleanor Sayres
Robert Lee Schimmel
James Forrest Shaffer
Jeane Lucille Sheppard
James Shields
Mary Frances Skinner
Beulah Adrin Smith
Mary Jane Smith
Betty Jane Spadafore
Evah Jeannette Steel
Wilda Eileen Steel
Dorothy Ann Stewart
Mary Louise Stewart
Anna Florence Stiles
Martha Jane Straight
Martha Belle Sturgeon
Virginia Summers
Richard Leaver Summers
William Elsworth Swiger
Ray Eugene Talkington
Ben Templin
Mary Katherine Tennant
Doris Lee Thomas
Nancy Adina Thomas
Richard Mearl Thompson
Mary Louise Wade
Harold Eugene Watson
Josephine Winifred Weekley
Alice Jane Wellman
Betty Louise Whisler
Wilburn Kyle Wilson
Juanita Marie Wright
James Carman Yanero
Harold Lloyd Yeater

On the hill each hour of happiness is like a pearl polished to perfection and strung on the long chain of friendship.







S O C I A L

OFFICERS

Frank Meyers	President
Richard Swisher	Vice President
Robert Hunt	Secretary
Patrick McAteer	Treasurer

TAU BETA IOTA

MEMBERS

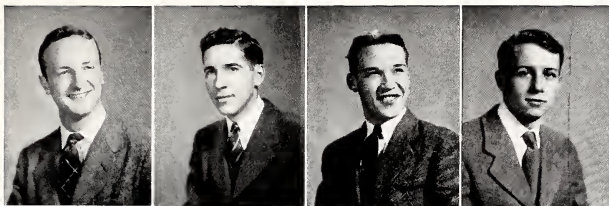
Turner Sturm
Frank Conaway
Richard Swisher
Robert Hunt
Paul Shahan
Eugene Satterfield
Robert Pence
Richard Berry
Arthur Lambert
Paul Kirkpatrick
Randolph Norris
Bud Haugh
Kyle Wilson
Dcn Louden
Doran Morrison

Patrick McAteer
Norvell Lilly
Sam Bonasso
Robert Johnston
James Fitzhugh
William Cronin
Louis Marra
Frank Meyers
Roderick Dixon
Robert O'Connor

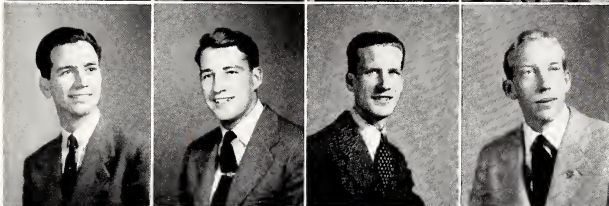
Preps

Richard Thompson
Ben Templin

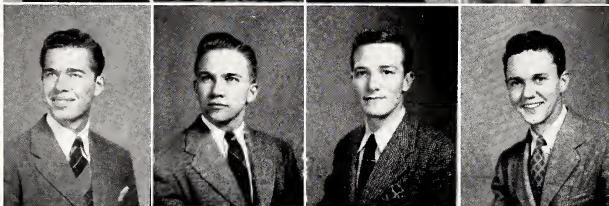




Turner Sturm
Eugene Sotterfield
Richard Swisher
Rondalph Narris



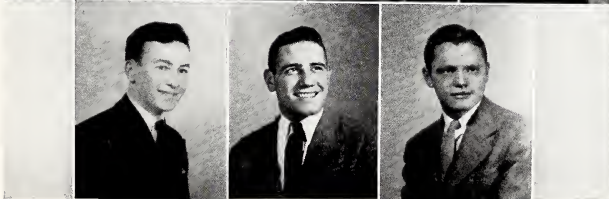
Arthur Lambert
Richard Berry
Robert O'Connar
James Fitzhugh



Ben Templin
Roderick Dixon
Frank Meyers
Paul Kirkpatrick



Norvell Lilly
Dan Louden
Robert Hunt
Beryl Middough



William Cronin
Robert Pence
Daron Morrison

TAU BETA IOTA



Jean Cassiday
 Lois Walters
 Marian Lilley
 Eleanor Sincell
 Mary Anne Muir

Mary D. Hunsaker
 Bonna B. Leep
 Doris Lee Thomas
 Marjorie Robinson
 Martha Lau Lambert

Anne Blair
 Betty McCarthy
 Julia DeBalt
 Vivian Ball
 Ann Rass

Suzanne Halbert
 Nedra Harr
 JaAnne Jenkins
 Alice J. Wellman
 Josephine Jenkins



Mory Jean Charleton
 Mary Louise Stewart
 Mary Jean Connor

Elaine Hutchinsan
 Potty Burke
 Loretta Romono
 Barbara Lemley

Melissa Curry
 Nadine Nestar
 Lucille Reed

Margaret Ann Huff
 Alice Swiger
 Peggy Gower

GAMMA CHI CHI

OFFICERS

Mary Jean Charleton	President
Eleanor Sincell	Vice President
Margaret Ann Huff	Secretary
Mary Anne Lively Muir	Treasurer

GAMMA CHI CHI

MEMBERS

Annabelle Alkire	Lois Walters
Anne Blair	Mary Davinna Hunsaker
Vivian Ball	Jean Cassidy
Melissa Brahm Curry	Mary Jean Connor
Patty Burke	Julia DeBolt
Mary Jean Charleton	Helen Gotses
Mary Elizabeth Cronin	Peggy Gower
Betty Gocke	Suzanne Holbert
Nedra Harr	JoAnne Jenkins
Margaret Ann Huff	Martha Lou Lambert
Elaine Hutchinson	Barbara Lemley
Josephine Jenkins	Betty McCarthy
June Ann Johnson	Bonnie B. Leep
Marian Lilley	Loretta Romano
Mary Anne Lively Muir	Ann Ross
Jeanne Louden	Marjorie Robinson
Nadine Nestor	Mary Louise Stewart
Lucille Reed	Mary Louise Wade
Marjorie Riblett	Alice Jane Wellman
Alice Swiger	Doris Lee Thomas
Eleanor Sincell	





Mory Blackburn
Doro Gene Byer
Ellen Jane Watson
Leono Menke



Doris Cleovenger
Mory Bort
Nell Coulter
Ruth Moyholl



Mory Jeon Abbott
Margoret Jane Payne
Sue Rose
Lorraine Kilcoyne



Pouline Robinson
Crystal Ogden
Georgonno Romine
Ivy Soyres



Dorothy Stewart
Mory Lee Weekley
Mory Von Meter



Chorlotte McKee
Doris Devore

SIGMA THETA RHO

OFFICERS

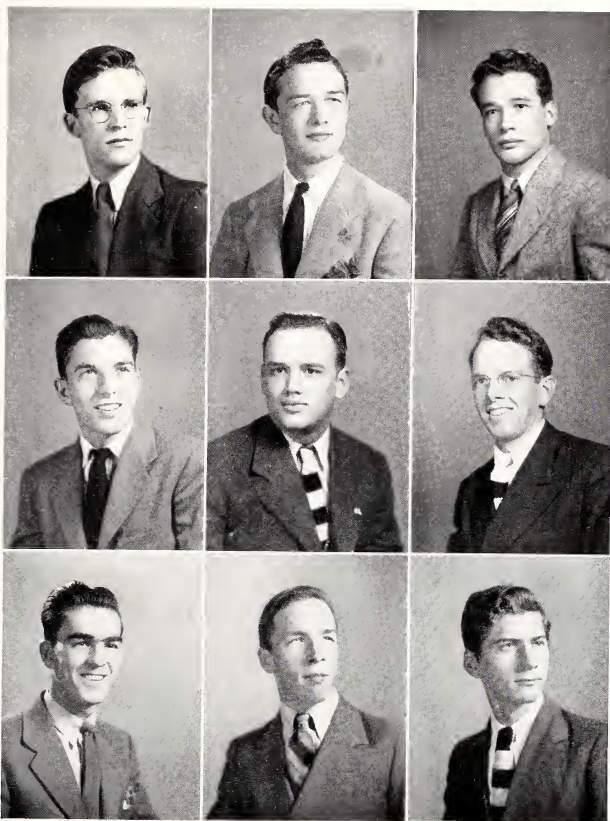
Georganna Romine	President
Margaret Jane Payne	Vice President
Sue Rose	Secretary
Crystal Ogden	Treasurer

SIGMA THETA RHO

MEMBERS

Mary Jean Abbott	Delores McKinney
Mary Bart	Leona Menke
Helen Benson	June Michael
Mary Blackburn	Olive Neely
Dora Gene Byer	Crystal Ogden
Doris Cleavenger	Margaret Jane Payne
Nell Coulter	Kendelyn Prince
Doris Devore	Pauline Robinson
Isabel Eib	Georganna Romine
Betty Griffith	Sue Rose
Doris Jean Hiner	Ivy Sayres
Frances Jamison	Dorothy Stewart
Lorraine Kilcoyne	Mary Van Meter
Ruth Mayhall	Mary Lee Weekley
Charlotte McKee	Lucille Willis





Dan Cale
Harley Pyles
Bob Willis

Danal Squires
Harald Yeater
William Balderson

Jerry West
Hyer Martin
Robert Swearingen

SIGMA TAU GAMMA

OFFICERS

Robert Willis President
Donal Squires Vice President
Robert Higinbotham, Secretary-Treasurer
Jerry West Sergeant-at-Arms

SIGMA TAU GAMMA

MEMBERS

Erwin Heck	Dwight Price
Edwin Heck	Jerry West
William Ford	Robert Willis
Jack Gump	Ray Epperly
Kenneth Beale	Harold Yeater
Donal Squires	Donald Cole
Harley Pyles	Hyer Martin
Bill Balderson	Robert Swearingen





Viala Springer
Virginia Summers
Anne Lynch
Pauline Wilson

Mortho Powers
Dorothy Cook
Louise Cain
Willo Capenhaver

Kitty Goskins
Ruth Stanley
Sara Jone Brannon
Helen Shingleton

Colleen Moore
Mary Jone Stevens
Jean Shingleton
Mildred Jones

ALPHA DELTA CHI



Aretta Summers
 Frances Janes
 Phoebe Coombs

Betty Spadofare
 Detto Glover
 Maxine Jahson

Isobel Kisner
 Barbara Victor
 Betty Langfield
 Helen Benda

Nancy Thamos
 Mildred Womsley
 Betty Reed

OFFICERS

Mildred Jones President
Mildred Wamsley Vice President
Anne Lynch Secretary
Aretta Summers Treasurer

ALPHA DELTA CHI

MEMBERS

Phoebe Louise Coombs	Mary C. Gaskins
Anne Lynch	Colleen Moore
Maxine Johnson	Margaret Harden
Mary Jane Stevens	Helen Shingleton
Mildred Wamsley	Frances Jones
Jean Summers	Ruth Stanley
Mildred Jones	Barbara Victor
Betty Longfield	Sara Jane Brannon
Betty Reed	Dorothy Cook
Lena Gabriel	Willa Copenhaver
Viola Springer	Detta Glover
Jean Shingleton	Isobel Kisner
Pauline Wilson	Betty J. Spadafore
Aretta Summers	Martha Jane Straight
June Harvey	Virginia Summers
Helen Benda	Nancy Thomas
Louise Cain	Grace Young



OFFICERS

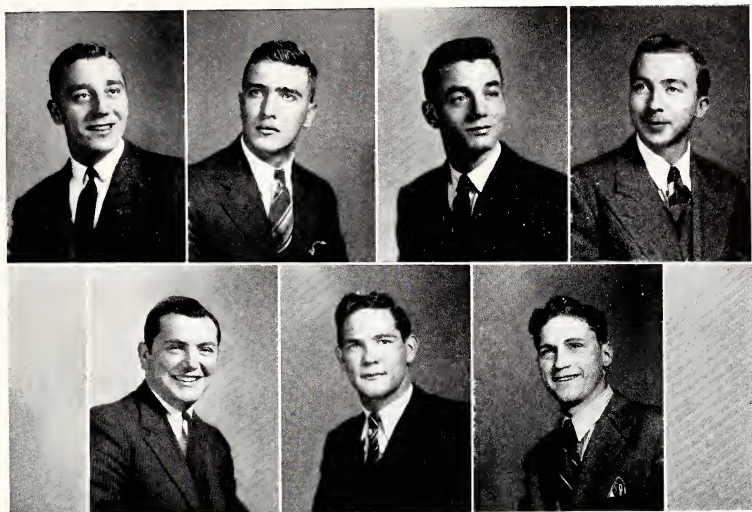
Thomas Koon President
Steve Yergovich Vice President
Joseph Devine Treasurer
John Mascara Secretary

ZETA SIGMA

MEMBERS

Thomas Andrick	Walter Owen
Thomas Argiro	Warren Owen
Joseph Devine	Virgil Rogers
George Hamric	Alfred Sandy
Thomas Koon	George Ross
Donald Lynch	Charles Swearingen
Hunter Fortney	E. Herbert Shaffer
Elmer Hendershot	Howe Anthony Stiger
Michael Hermasilla	Steve Yergovich
John Mascara	





Walter Owen

George Hamric

Warren Owen

Thomas Koon

Steve Yergovich

Tam Andrick

Elmer Hendershat

ZETA SIGMA



Queen Lucille I



Lucille Reed, charming Junior girl, was crowned Queen Lucille I of the Junior Prom in honor of the Seniors by the Junior Class of 1943.

Climaxing a year of social activity events, the Junior Prom is eagerly anticipated as one of the most beautiful ceremonies of the year. This year it was staged for the second time in the magnificent Colebank Gymnasium, the pride of the campus.

Queen Lucille chose as her Maid of Honor pretty Mary Davinna Hunsaker. In her court were Eleanor Sincell, Lena Gabriel, Leona Menke, Mabel See, and Jean Campbell, all popular young women of the Junior Class. They made an enchanting picture as they slowly promenaded toward the throne.

The latter was set in the midst of spring flowers and fernery and made a fitting background for the gracious Queen. For Queen Lucille's entertainment, Josephine Jenkins vocally serenaded her and her court.

"Jackie" Wallman performed admirably as the tiny crown bearer and Michael Evans made a completely captivating flower girl. The Queen was crowned by Richard Swisher, President of the Junior Class.





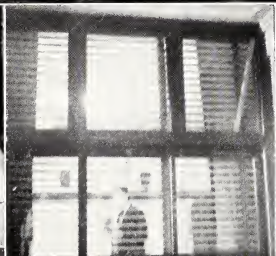
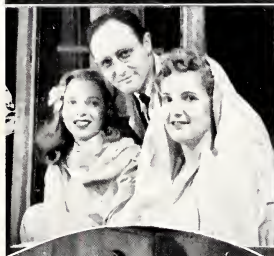
Dramatics

With "Arsenic and Old Lace" the Masquers began their twenty-first season of dramatic productions for Fairmont audiences. In the cast were Melissa Brahm Curry and Mary Frances Zinn as the maiden aunts, Waldon Skinner and Don Lynch as their mentally unbalanced brothers, and Norvell Lilly and Julia DeBolt carried the love interest.

Second on the Masquers' program was "Blithe Spirit" featuring Elaine Hutchinson in the title role with Jerry West as her harrassed husband and Betty Longfield as his long-suffering second wife. Mary Frances Zinn played the role of the medium; Anne Blair, the maid; and Eleanor Sincell and Donal Squires, two friends of the family.

For their third production the Masquers presented a variety show, the Victory Arts Parade, which included two one-act plays, cartooning, two choruses, and a piano duet and solo.





The entire cast of "Blithe Spirit." Left to right: Elaine Hutchinson as Elviro, the blithe spirit; Mary Frances Zinn as Madame Arcoti; Betty Longfield as Ruth Condomine; Jerry West as Charles Condomine; Anne Blair as Edith; Eleonor Sincell as Violet Brodmon; and Don Squires as Dr. Brodmon.

Left to right: Two ghosts and their director; Venetian blind view of Mr. Wallmon's new office; Mortha Powers goes military; Sincell poses; mask of the director; Don Squires in search of a costume.

Great things thro' greatest hazards
are achieved, and then they
shine.

—Beaumont and Fletcher







MOUND ROOM

A C H I E V E M E N T



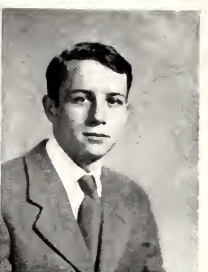
EUGENE SATTERFIELD
President



JOSEPHINE JENKINS
Vice President



ANNE LYNCH
Secretary



RANDOLPH NORRIS
Treasurer

STUDENT BODY OFFICERS

Striving to produce a more efficient government and a higher degree of self-sufficiency among the students, the Student Council has performed its duties conscientiously and well. Although handicapped by a decreased enrollment they did their utmost to preserve regularity and the high standards characteristic of Fairmont College student government. Conscious at all times of the trust placed in them, their abilities, time, and interest were always at the command of the students they served.

Eugene Satterfield	President
Josephine Jenkins	Vice President
Anne Lynch	Secretary
Randolph Norris	Treasurer
Jack Squires	Sergeant-at-Arms
Lawrence A. Wallman	Faculty Adviser



ALPHA PSI OMEGA

OFFICERS

Elaine Hutchinson	Cast Director
Melissa Brahm Curry	Stage Manager
Josephine Jenkins	Worthy Playwright
Lawrence Wallman	Faculty Adviser
Dr. Paul F. Opp	Faculty Adviser

MEMBERS

Mary Frances Zinn
 Norvell Lilly
 Jerry West
 Anne Blair
 Betty Longfield
 Robert Higinbotham
 Elaine Hutchinson
 Don Cole
 Melissa Brahm Curry
 Donal Squires
 Josephine Jenkins

Alpha Chapter of Alpha Psi Omega, National Honorary Dramatics Fraternity, was organized in August, 1925. Designed to reward students interested in drama for noteworthy achievement, Alpha Psi Omega is purely honorary in character.



Back Row: Mary Ann Lively Muir, Robert Pence, Turner Sturm, Marian Lilley.

Front Row: Mary D. Hunsaker, Elaine Hutchinson, Anne Blair, Betty Longfield.

ELAINE HUTCHINSON
Editor

ANNE BLAIR
Business Manager

MOUND STAFF

Elaine Hutchinson	Editor
Robert Pence	Associate Editor
Anne Blair	Business Manager
Mary D. Hunsaker	Associate Business Manager
Betty Longfield	Art Editor
Turner Sturm	Sports Editor
Marian Lilley	Advertising Manager
Mary Ann Lively Muir	Associate Advertising Manager
Donald Lynch	Photograph Editor
Robert Higinbotham	Photograph Editor
Dr. Grover C. Platt	Faculty Adviser

COLUMNS STAFF

Ruth Mayhall	Editor-in-Chief
Phoebe Louise Coombs	Business Manager
Aretta Summers	News Editor
Isabelle Kisner	Assistant News Editor
Georganna Romine	Society Editor
JoAnne Jenkins	Assistant Society Editor
Marguerite Curry	Photographer
Turner Sturm	Sports Editor
Jack Milan	Copy Editor
Betty Reed	Advertising Manager
Rhoda Moss	Circulation Manager
Kendolyn Prince	Assistant Circulation Manager
Josephine Jenkins	Columnist
Elaine Hutchinson	Columnist
Mary Jean Charleton	Columnist
Medora M. Mason	Faculty Adviser

First Row: Josephine Jenkins, Rhoda Moss.

Second Row: Georgonno Romine, Ruth Moyholl, Kendolyn Prince.

Third Row: Dorothy Cook, Eloine Hutchinson, JoAnne Jenkins, Aretta Summers.

RUTH MAYHALL
Editor-in-Chief

PHOEBE LOUISE COOMBS
Business Manager



WHO'S WHO AMONG STUDENTS IN AMERICAN UNIVERSITIES AND COLLEGES

Seventeen Junior and Senior students of Fairmont State College received national honor by being listed in this year's edition of "Who's Who Among Students in American Universities and Colleges." The qualifications that are used as a basis for the selection are character, leadership, scholarship, and potentialities. We feel that our students having won these laurels, rightfully deserve recognition.

ANNABELLE ALKIRE—Will receive her A.B. in Physical Education. She is President of Morrow Hall, Vice President of the Girls' Physical Education Club, a member of Gamma Chi Chi sorority, and a counselor of freshman women.

PHOEBE LOUISE COOMBS—Majoring in English, she is a member of the Alpha Delta Chi sorority, President of Pi Upsilon Phi, and Business Manager of the Columns. Last year she served as the Columns Advertising Manager and, during her freshman year was a member of the Mound Staff. Formerly she was a member of the Choral Club and the Y.W.C.A.

ELAINE HUTCHINSON—Will receive her A.B. in English. Editor of the Mound, she is a member of Nu Alpha Phi and President of Alpha Psi Omega, National Honorary Dramatics Fraternity, and has starred in many plays during her four college years. In 1942 she was chosen Queen of the annual Junior Prom and, for two years she has written the column "On With the Show" for the Columns. She is Vice President of the state organization of Alpha Psi Omega, has served as a freshman counselor, and is a member of the Gamma Chi Chi sorority.

JOSEPHINE JENKINS—Vice President of the Student Body, she will receive her A.B. in English. She has been Chairman of the Women Counselors for the past two years and is a former Editor of the Columns. She is a member of Gamma Chi Chi, Pi Upsilon Phi, Alpha Psi Omega, Kappa Delta Pi, and is now a columnist for the Columns.

MILDRED JONES—President of Alpha Delta Chi, her major is Home Economics. She is President of the Choral Club, writer of the Columns service column, a member of the Home Economics Club, and Secretary of Kappa Delta Pi. Last year she was Vice President of the Junior Class and President of Y.W.C.A.

RUTH MAYHALL—Majoring in English, she is Editor of the Columns, Treasurer of Kappa Delta Pi, a member of the Social Science Club, Nu Alpha Phi, and a freshman counselor. She is Devotional Chairman this year for the Y.W.C.A. and last year was its President. She has been News Editor of the Columns, President of Sigma Theta Rho, and Secretary of the Interfraternity Council.

DORAN MORRISON—Senior Class President and President of the Masquers' Club, he has played prominent parts in many college plays and will receive his A.B. in English. He is a former President of Tau Beta Iota fraternity and is in the Enlisted Reserve Corps.

RANDOLPH NORRIS—Treasurer of the Student Body and Editor of last year's Mound, he will receive his A.B. in Mathematics. He is a Freshman Counselor and a member of the Tau Beta Iota fraternity.

WALTER OWENS—A member of Lambda Alpha Sigma, lettermen's organization, he has been a varsity man on the football, basketball, and baseball teams for the past three years. He is a member of the Zeta Sigma fraternity.

ROBERT PENCE—Will receive his A.B. degree in Physical Education. He is a member of the Tau Beta Iota fraternity, Lambda Alpha Sigma, President of Freshman and Sophomore Classes, Voice Scholarship Winner, Football, Basketball, Baseball, selected on the West Virginia All-Conference Basketball Team, is Associate Editor of the Mound, and was last year's Student Body President.

BETTY REED—She has received her A.B. degree in English. She is Advertising Manager of the Columns, a member of Pi Gamma Mu, Kappa Delta Pi, the Social Science Club, The Future Teachers of America, and Alpha Delta Chi sorority. Formerly she was a member of the Choral Club and the Y.W.C.A.

GEORGINA ROMINE—Will receive her A.B. degree in Home Economics. President of the Sigma Theta Rho sorority, she is also President of the Y.W.C.A., and President of the Women's Pan Hellenic Association. She is a former Secretary of Sigma Theta Rho, a member of the Home Economics Club, Secretary of Sigma Pi Rho, and Society Editor of the Columns.

EUGENE SATTERFIELD—Has received his A.B. degree in Biology. He is President of the Student Body, a member of the Tau Beta Iota fraternity, Kappa Delta Pi, and the college tennis team. Last year he served as Junior Class President and now is enlisted in the United States Naval Reserve.

TURNER STURM—A Junior this year, he was majoring in Physical Education. He was Student Director of sports publicity for the college and Sports Editor for the Columns. He was a cheerleader and member of the Tau Beta Iota fraternity. Last summer he was President of the school Student Body and is now a cadet in the Army Air Force Reserve.

ARETTA SUMMERS—She is a Junior and is majoring in Social Studies. She is President of Sigma Pi Rho, Secretary-Treasurer of the Social Science Club, a member of Pi Gamma Mu and The Future Teachers of America, Treasurer of Alpha Delta Chi, and News-Editor of the Columns.

LUCILLE MEREDITH WILLIS—She is Vice President of Kappa Delta Pi and a member of Pi Gamma Mu and Nu Alpha Phi. During her Freshman year she was the winner of the M. M. Neely oratorical prize and last year was Devotional Chairman of the Y.W.C.A., and a Freshman Counselor. She has served as Secretary and Pledgemistress of the Sigma Theta Rho sorority.

THOMAS KOON—Will receive his A.B. degree in Latin. He is President of Kappa Delta Pi, President of the Zeta Sigma fraternity, and President of the Future Teachers of America. He is a member of Sigma Pi Rho and, during his Freshman year, he received the Haymond constitutional prize. He is in the Army Enlisted Reserve.





MEMBERS

Betty Reed
 Eugene Satterfield
 Mildred Jones
 Thomas Koon
 Mary Jean Abbott
 Ruth Mayhall
 Josephine Jenkins
 Sarah Helen Powell
 Robert Groves
 Lucille Willis
 Mabel Loper
 June Michael
 Jean Summers

KAPPA DELTA PI

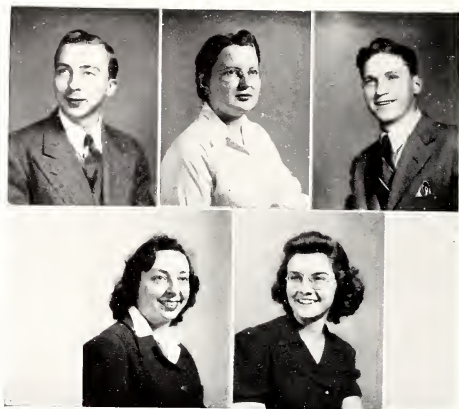
OFFICERS

Thomas Koon President
 Mary Jean Abbott Vice President
 Mildred Jones Secretary
 Ruth Mayhall Assistant Treasurer

In 1931, the Beta Omega Chapter of Kappa Delta Pi, national honorary society in education, was established at Fairmont State College.

The purpose of the society is to encourage in its members a higher degree of devotion to social service.

To this end it invites to membership those who exhibit worthy educational ideals, sound scholarship, and adequate personal qualifications. It endeavors to develop a higher degree of professional fellowship among its members.



SOCIAL SCIENCE CLUB

OFFICERS

Rhoda Moss	President
Elmer Hendershot	Vice President
Aretta Summers	Secretary-Treasurer
C. A. Lindley	Faculty Adviser
E. L. Lively	Faculty Adviser
Bessie K. Crystal	Faculty Adviser

MEMBERS

Mary Jean Abbott
 Dora Gene Byer
 Dorothy Cook
 Elmer Hendershot
 Mary D. Hunsaker
 Thomas Koon
 Rhoda Moss
 Pauline Robinson
 Aretta Summers
 Beulah Smith

Robert Groves
 Joyce Wiseman
 Mrs. C. M. Roberts
 Miss Bessie Crystal
 Dr. C. A. Lindley
 Mr. E. L. Lively
 Dr. Grover C. Platt
 Miss Dorcas Prichard
 Dean John W. Pence
 Mr. Haddon Rhodes

Membership in the Social Science Club is open to any student interested in social studies. This club is one of the sponsors of the annual Social Science Council.



MEMBERS

Warren Owens
George Hamric
Frank Meyers
Harley Pyles
Thomas Andrick
Richard Berry
Walter Owens
Steve Yergovich
Eugene Satterfield
Turner Sturm
Robert Pence

LAMBDA ALPHA SIGMA

FAIRMONT COLLEGE LIBRARY



Y. W. C. A.

OFFICERS

Georganna Romine	President
Crystal Ogden	Vice President
Mary VanMeter	Secretary
Pauline Robinson	Treasurer
Miss Edna Miller	Adviser

MEMBERS

Mary Jeon Abbott
 Annabelle Alkire
 Mary Bart
 Helen Benson
 Mary Blackburn
 Jeon Campbell
 Doris Cleavenger
 Dorothy Caak
 Willo Copenhover
 Nell Coulter
 Daris Devare
 Deloine Durst
 Detto Glover
 Betty Griffith
 Mory Heck
 Daris Jeon Hiner
 Suzanne Holbert
 Frances Jamison
 JoAnne Jenkins
 Frances Jones
 Mildred Jones
 Larroine Kilcoyne
 Isabel Kisner
 Mortho Lau Lombert
 Mabel Loper
 Anne Lynch
 Tereso Mazzo
 Ruth Moyhall

Charlotte McKee
 Delares McKinney
 Leano Menke
 Miss Edno Miller
 Olive Neely
 Gwen Newlon
 Beryl Nuzum
 Crystal Ogden
 Peg Payne
 Helen Pawell
 Kenny Prince
 Adean Rector
 Marjarie Robinson
 Mory Nell Robinson
 Georgonno Romine
 Sue Rose
 Margaret Rasier
 Ann Rass
 Anno Sallise
 Ivy Sayres
 Beulah Smith
 Dorothy Stewart
 Alice Swiger
 Noncy Thamas
 Mary VanMeter
 Ellen Jane Watson
 Pauline Robinson
 Pauline Wilson

MASQUERS CLUB

OFFICERS

Betty Longfield President
Martha Powers . . . Secretary-Treasurer

MEMBERS

Jean Campbell
Lucille Reed
Elaine Hutchinson
Doran Morrison
Betty Longfield
Anne Blair
Donal Squires
Rod Dixon
Waldon Skinner
Bill Ford
John Dragoo
Sam Bonasso
Mary Louise Wade

Peggy Gower
Doris Lee Thomas
Vivian Ball
Eleanor Sincell
Ann Ross
Nancy Thomas
Julia DeBolt
Martha Lou Lambert
Alice Jane Wellman
Ann Ely
Norma Jean Lilley
Lois Walters





HOME ECONOMICS CLUB

OFFICERS

Crystal Ogden	President
Mary VanMeter	Vice President
Peg Payne	Secretary
Bernice Vincent	Treasurer

MEMBERS

Virginia Coffman
 Alice Swiger
 Nell Coulter
 Virgil Wilson
 Freda Moore
 Anna Ruth Shreve
 Jean Shingleton

Ivy Sayres
 Georganna Romine
 Ellen Jane Watson
 Pauline Wilson
 Ruth Wittman
 Anna Sallese
 Mary Lee Weekly

Pauline Robinson
 Helen Powell
 Mildred Jones
 Mary Heck
 Bernice Vincent
 Peg Payne
 Mary VanMeter
 Crystal Ogden

GIRLS' CHORAL CLUB

OFFICERS

Mildred Jones President
Betty Longfield Vice President
Margaret Ann Huff Secretary-Treasurer
Mary B. Price Faculty Adviser

MEMBERS

Jean Campbell
Isabel Eib
Elizabeth Gocke
Josephine Jenkins
Frances Jones
Mildred Jones

Jeanne Lane
Doris Jean Hiner
Margaret Ann Huff
Marian Lilley
Mary Ann Lively Muir
Betty Longfield

Natina Morace
Margaret Pantalone
Kendolyn Prince
Margaret Rosier
Mildred Wamsley





MORROW HALL

OFFICERS

Annabelle Alkire	President
Mildred Wamsley	Vice President
June Harvey	Chairman of Ways and Means Committee
Marian Lilley	Secretary of Ways and Means Committee

MEMBERS

Annabelle Alkire
 Mary Bart
 Helen Benda
 Helen Benson
 Mary Blackburn
 Doris Cleavenger
 Willa Copenhaver
 Nell Coulter
 Delaine Durst
 Isobelle Eib
 Dorotha Fletcher
 Detta Glover
 June Harvey
 Doris Jean Hiner
 Florence Horner
 Francis Jamison
 Betty Lee Janes

Frances Jones
 Mildred Jones
 Augusta Kiplinger
 Lorraine Kilcoyne
 Jeanne Lane
 Marian Lilley
 Betty Longfield
 Mabel Loper
 Charlotte McKee
 Dolores McKinney
 Betty Lou Maple
 Leona Menke
 Nadine Nestor
 Gwendolyn Newlon
 Crystal Ogden
 Margaret Jane Payne
 Mary Nelle Robinson

Marjorie Robinson
 Loretta Romano
 Sue Rose
 Margaret Rosier
 Ann Ross
 Jean Shingleton
 Helen Shingleton
 Mary Susan Simon
 Mary Skinner
 Dorothy Stewart
 Alice Swiger
 Nancy Thomas
 Mildred Wamsley
 Mary Jean Charleton
 Phyllis Muir
 Mary Lee Weekley
 Wilda Ridenour







P H Y S I C A L



VARSITY FOOTBALL

JASPER H. COLEBANK
Director of Athletics

WILFORD WILSON
Coach

THE SEASON IN REVIEW

October 4: Fairmont 7 — West Virginia Tech 0

The Fighting Teachers opened their 1942 season in a blaze of glory by avenging last fall's defeat by West Virginia Tech. A long pass in the third quarter from Bab Pence to Dick Berry set up the battle's lone touchdown, and Marra carried it over. Pence converted for the extra point.

October 11: Fairmont 14 — Potomac State 12

The Catamounts of Patamac State were the next to fall before Fairmont's powerful machine in a thrilling battle waged at Rosier Knab. The Fighting Teachers scared first when Pence plunged over and converted giving State the lead, 7-0. However, at the start of the second half Patamac, led by Cox, rallied

over two quick touchdowns to take command, 12-7. In the final minute Pence's long pass to Bietermon, plus Morra's plunge across, and Pence's conversion, brought State a 14-12 victory.

October 18: Fairmont 8 — Potomac State 6

On the following week State journeyed to Keyser to play a return game with Potomac. It was largely a defensive battle until late in the third quarter when Owens, on a reverse, ran twenty-five yards to a touchdown. A blocked punt behind the goal by the fast charging Fairmont line, gave State on 8-0 lead. Potomac finally scored in the final seconds but wound up on the short end of the score.

October 25: Fairmont 13 — West Liberty 20

In the most thrilling game of the season West Liberty handed State her first defeat. West Liberty, featuring a magnificent passing barrage with a powerful ground attack, had the Fighting Teachers 20-0 with only a few minutes remaining in the game. At this point Pence passed fifty yards to Berry and Marra took it over. West Liberty recovered the following kickoff and marched to the Fairmont twenty-five where Pence intercepted a pass and ran seventy-five yards for a touchdown. Pence's pass to Berry made the score 20-13, West Liberty. However, time called a halt to the game before Fairmont could get the ball over again.



First Row: Hunter Fartney, Jock Gump, Frank Conaway, Ray Valentine, Jim Yanero, Junior Thompson, Bernie Bietermon, Jim Sweeny.
 Second Row: Carl Hall, Tony Pasqualle, John Mascara, Lou Morra, Walt Owens, Warren Owens, Bob Hunt, Tam Andrick, Kyle Wilson.
 Third Row: John Manchin, Dick Berry, Bob Pence, Bill Swiger, John Hawkins, Ed Sabek, Steve Yergavitch, Coach Squib Wilson.
 Fourth Row: Mgr. Bud Haugh, Mgr. Bab Johnston, Mgr. George Hamric, Dan Loudon, John Janes, Publicity Man Scaap Sturm.

November 1: Fairmont 6 — Glenville 25

Colls to service crippled the Fairmont team and their trip to Glenville ended in disastrous defeat. The Pioneers scored in every period, twice an intercepted pass, once on a blocked kick, and once by rushing. Fairmont's lone score came when Pence went over after a reverse to Owens had taken the ball to the one-yard line.

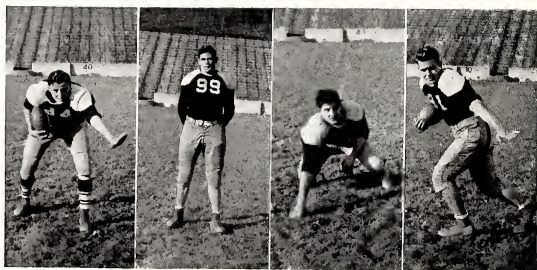
November 8: Fairmont 6 — Bethany 14

Injuries plagued the Fairmont squad and helped to engineer Bethany's humiliating defeat over State. Bethany tallied twice on long passes, while Fairmont's

score came on a sixty-five yard runback of an intercepted pass by Mascara. Several players were injured in this game making Fairmont's finale with West Liberty look bleak.

November 15: Fairmont 6 — West Liberty 40

West Liberty completely overran the Fighting Teachers. A powerful land and air attack completely baffled the Professors who played with several stars out of the line-up due to injuries. It was a for cry from the fine West Liberty battle three weeks before. State's lone touchdown came of a long pass from Hawkins to Bietermon.



DEWEY HAWKINS, Quarterback

Hawkins, a 200 pound senior, held down the blocking quarterback post for the Teachers, did some passing, and backed up the line on the defense. His loss will be felt when football is resumed.

TOM ANDRICK, Tackle

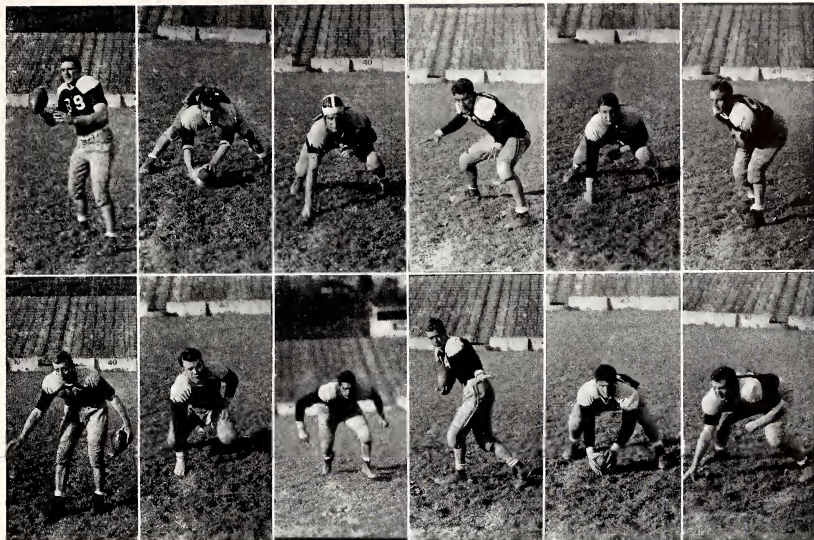
Full of fight and ability, Andrlick filled the right tackle job on State's powerful line. Tom's aggressiveness and power made him a formidable opponent.

JOHN MANCHIN, Tackle

Always dependable and full of spirit, John helped fill the tackle posts at any time. His weight and experience proved valuable to the Fairmont line.

JIGGS MARRA, Left Half

When it came to carrying the ball, Jiggs had power to burn along with shifting sidestepping which gave State many long gains and touchdowns. Marra is one of next year's co-captains.



BOB PENCE, Fullback

Ending his great career in a blaze of glory, Pence led the team with the powerful running and accurate passing which gained him Honorable Mention on the little All-American team. His name will go down as one of the greatest of Fairmont's football heroes.

WARREN OWENS, Center Guard

Another senior, Ham started the season as substitute center but played so well that he was shifted to regular guard berth. He made up for his lack of weight with plenty of zip and fight.

DICK BERRY, End

One of State's greatest linemen, Berry's drive and power together with his pass receiving made him feared by all Fairmont's opponents.

CARL HALL, Guard

Hall played one of the toughest positions on the team, the inside guard. He filled the post admirably, however, and, as a senior, gave the others something to shoot at.

JIM SWEENEY, Halfback

Chipmonk was one of the smallest men on the squad but was absolutely fearless. He played the roll of a substitute but could be depended upon for real relief.

WALT OWENS, Right Half

Walt ended his last season at State in great style with the shiftest running on the squad. Lefty did all the punting, some passing, and was always a serious threat in the open field.

FRANK CONAWAY, Guard

Small but mighty, Frank displayed courage and shiftness that more than made up for his size. Conaway, a freshman, didn't start many games, but he played the greater part of all of them.

TONY PASQUELLE, Guard

Although hampered by injuries most of the season, Tony really played ball when called to the field. He will be valuable when football resumes.

BERNIE BIETERMAN, Halfback

When Bieterman entered the game it usually meant something big was going to happen. He made up for his small size with terrific speed and shiftness.

JOHN MASCARO, Center

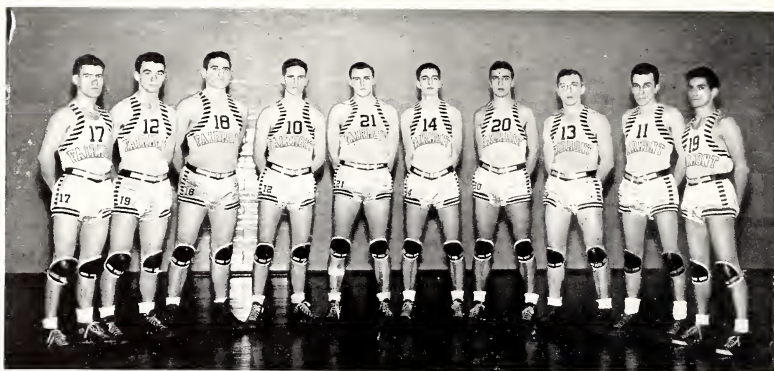
Playing his first season as a regular, Muss performed like a true veteran. His great defensive work backing up the line together with his accuracy in passing the ball, was one of the strong points of State's line.

ED SOBEK, End

This former Greenwich, Connecticut, star made the first string his freshman year, a novelty at Fairmont. His vicious tackling and blocking aided State considerably in their gridiron season.

STEVE YERGOVICH, Left Tackle

This 235 pound giant made his side of the line nearly impregnable. He was also a good blocking tackle and has been chosen co-captain of next year's team.



Left to Right: Bernie Bieterman, Warren Owens, Bob Pence, Bab Johnston, Dewey Hawkins, Carl Payne, George Hamric, Walt Owens, Fritz Jacobs, Paul Graziano.

VARSITY BASKETBALL

Fairmont 44	California 28
Fairmont 48	Marietta 56
Fairmont 41	Wesleyan 47
Fairmont 43	West Liberty 53
Fairmont 59	Bethany 45
Fairmont 55	West Liberty 56
Fairmont 47	Wesleyan 36
Fairmont 50	Glenville 75
Fairmont 76	West Virginia Tech 50
Fairmont 51	Morris Harvey 55
Fairmont 55	Bethany 50
Fairmont 69	West Virginia Tech 33
Fairmont 55	Salem 56
Fairmont 81	California 34
Fairmont 64	Alderson-Broaddus 36
Fairmont 62	Salem 54
Fairmont 43	Marietta 36
Fairmont 52	Glenville 57
Fairmont 45	Alderson-Broaddus 48
Fairmont 67	Salem 47

Won 11 out of 20 games.

Starting the season with only five lettermen from last year's great team which won 17 out of 23 contests, Fairmont opened her basketball season by winning over California. Bad luck plagued the Teachers and they lost their next three games to Marietta, Wesleyan, and West Liberty.

After the Christmas holidays, State journeyed to the northern panhandle and whipped Bethany, then dropped a heart-breaker to West Liberty.

Returning home they avenged Wesleyan but took a trouncing from Glenville.

In a southern trip they blitzkrieged West Virginia Tech but dropped another thriller to Morris Harvey.

From here on State got her bamsights adjusted and hit the winning side nearly every game. They won from Bethany and Tech, last to Salem, but bounced back to take their next four games from California, Alderson-Broaddus, Salem, and Marietta. Fairmont then gave undefeated Glenville its worst scare of the season before bowing to 57-52. An upset in the next game with Alderson-Broaddus set up the Teachers for their best game and most glorious victory. In this last game, against Salem, Braams Abramovic, national scoring champ, was held to nine points while Fairmont's own Bob Pence threw in 29.

Walt Owens—Playing his fourth year as a member of the squad, Walt had his greatest season. Used at guard or center, he was the fastest man on the team, a crackshot, and a bulwark on the defense. Owens was also co-captain of this year's team and second high scorer with 177 points.

Warren Owens—Guard or forward, "Gooch" could fill in anywhere and the team would click just the same. An excellent dribbler and a great defensive man, he finished his career with the same dependability and fight he began it four years ago.

Bernie Bieterman—Small but fast, Bernie could be depended on to fill in when the going was tough. Used only sparingly, he scored in nearly every game in which he played.

Dewey Hawkins—Strong on the defense and adding field goals when they were most needed were specialties of Dewey's. He has the unusual record of never being banished from a game because of personal fouls. His presence in every game made State's defense safe.

Bob Pence—All-Conference forward and co-captain, Pence broke all scoring records of Fairmont College. He has scored more points in one game, 37, in one season, 482, and in four years, 1,660, than any other player in Fairmont's history. He was an excellent passer and defensive man and truly led his team to their greatest athletic heights.

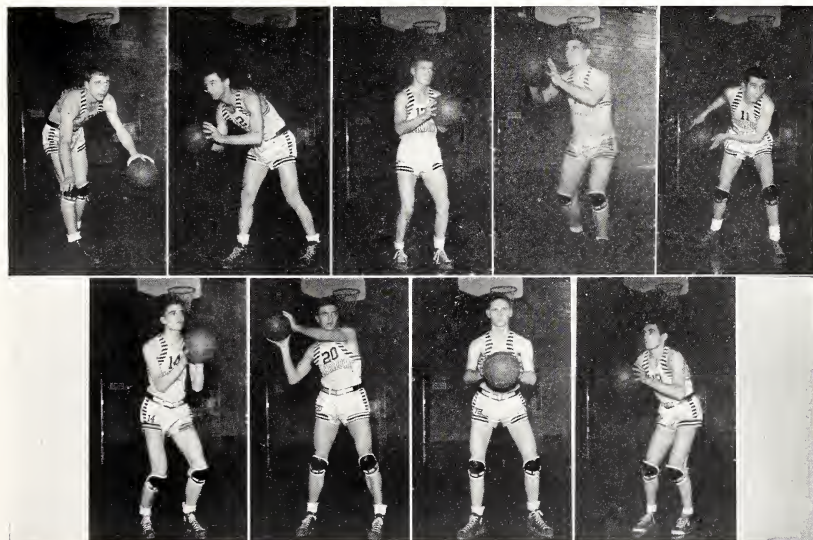
Fritz Jacobs—Handling the post of center in a substitute role, Fritz was a dead shot around and under the basket. He was also a better than average defensive player and gave State the "shot in the arm" it needed in several games.

Carl Payne—Becoming eligible at the semester, "Slick" only got to play five games for the Fighting Teachers before he answered Uncle Sam's call. However, in that time, he made a name for himself averaging 15 points a game and all around floor work which aided State to several victories.

George Hamric—One of the most improved players on the squad, George finished his first year as a regular in third place in team scoring with 166 points. His work on rebounds plus being a dead shot made him always a serious scoring threat.

Bob Johnston—Bob was one of the best guards in the Conference. His timing, work on rebounds, accurate passing, and occasional field goals made him one of the steadiest players on the team. He usually guarded the star on the opposing team and made some big dents in their averages.

Paul Graziano — A freshman who played like a veteran, "Blocky's" speed and ball-hawking sabotaged enemy morale and unity. An excellent shot and a good play maker, he will some day be one of State's outstanding stars.



Greetings to Fairmont College
from
AN OLD FAIRMONT INDUSTRY

FAIRMONT ALUMINUM COMPANY

H. A. DODGE

Jeweler

Watches - Diamonds - Silver - China
Expert Jewelry and Watch Repairing

125 Adams Street Phone 36
Fairmont, W. Va.

SHARP-HAMILTON CO.

"The Man's Store"

SERVICE and QUALITY

203 Main Street Fairmont, W. Va.

Best Wishes
to the
Boys in Service

★

Allied Paint & Glass Co.

DOMESTIC COKE CORPORATION

•

COKE
FOR
YOUR
FURNACES

HARTLEY'S SHOE REPAIR SHOP

Expert Work Done at
Minimum Cost

Phone 2010

FOR TASTY FOODS . . .

PALACE RESTAURANT

FAIRMONT'S LEADING RESTAURANT

OPEN DAY and NIGHT

WEBER'S FLOWER STORE

219 Jefferson Street

Phone 838

LIPSON'S JEWELRY STORE

The Store for Service

Next to Virginia Theatre

OWENS-ILLINOIS GLASS COMPANY

MANUFACTURERS OF OWENIZED

GLASS CONTAINERS

JAHN & OLLIER AGAIN



LOYAL

always, to the
cause of better
Yearbooks

JAHN & OLLIER
ENGRAVING CO.

Makers of Fine Printing
Plates for Black and Color
Artists - Photographers

817 W. WASHINGTON BLVD
CHICAGO

Have Your Formals and Dinner Meetings at . . .

The Fairmont Hotel

STUDENTS . . .

Select Your

Spring Suit at

MAUNZ

200 Adams Street

Phone 27

ROBINSON COMPANY

Jewelers

WATCHES

DIAMONDS

SILVERWARE

And Other Gifts Hard to Find

Opposite Bus Terminal

Fairmont State College

This institution is centrally located in a populous section of West Virginia. It is convenient to the homes of a large number of young men and women who are offered superior educational advantages. This college provides the following advantages which should be carefully noted by young people in northern West Virginia seeking higher education:

1. It has a faculty of highly trained and experienced men and women.
2. It has a large library of well selected books.
3. It has a modern well equipped Science Building.
4. It offers unusual opportunities for student activity and participation.
5. It has a rich and educative social life.
6. It provides higher education at moderate cost to the student.
7. Its graduates rank high in the field of teaching and at other institutions.

The cooperation of graduates and students in building up our college is requested. If our graduates believe the above statements they should impress them upon their friends who are choosing a school. For information write to Joseph Rosier, President.

The Home of Individual
CLOTHES
For Men and Women

Golden Bros.

"Open a Charge Account"

HOLLYWOOD SHOP

Exclusive for
College Students

224 Adams Street

HAUGE'S

•
F L O W E R S
for
Every Occasion

•
Fifth Street and Fairmont Avenue
Phone 541

Meet the "Gang" at . . .

THE COLLEGE GYP JOINT

(and we mean gyp)

George Ross

Joe Muto

The Staff of the 1943 Mound takes this opportunity to extend its gratitude to those patrons who have helped in a financial way in the publication of THE MOUND. Without their cooperation this publication would have been impossible.

BOOSTERS

MAYOR FRED T. WILSON
MISS HAZEL A. HOLT
JOE LA ROSA
INTER-URBAN RESTAURANT
VENETIAN LUNCH

The MOUND Was Printed by the

*Ziegler Printing
Company*

Butler, Pennsylvania



Fairport State College Library



3 2171 000332705 6

